

Building
better,
together

SPC Monthly Message #33 5-2-22

Mother's Day is Sunday, May 8th. Call your mom on Mother's Day.

The weather is getting warmer, and our construction projects are in full swing. With increased activity comes more exposure to accidents on our projects. This is a reminder to all our field team to watch out for each other so they can go home injury free at the end of the day.

Our Fabrication Shop is set up and producing a variety of fabricated items. While we are in production, we continue to search for steps to improve workflow and efficiencies and have engaged with Victaulic to evaluate our manufacturing processes and offer recommendations for improvements. We also welcome input from our field teams that receive prefabricated from the shop. Continuous feedback helps the prefabrication team refine their processes and generate new ideas for our prefabrication efforts.

This shop is an impressive facility that will continue to grow in capacity and capability as we explore and develop additional prefabricated components. We are very fortunate to have a talented team of craftsmen and women in this shop and look forward to watching them grow and do some amazing things.

Most of you know we have been hosting a charity golf tournament for the last few years (except for 2020 due to COVID) to benefit undernourished children in North Carolina. This tournament continues to grow through Floyd McCabe's hard work. Due to high demand from our industry friends, we added a second course to the tournament. This allowed us to double the number of participants and it sold out in less than two weeks! This says a lot about our clients and our vendors who are so willing to open their checkbooks to help us in this charitable cause.

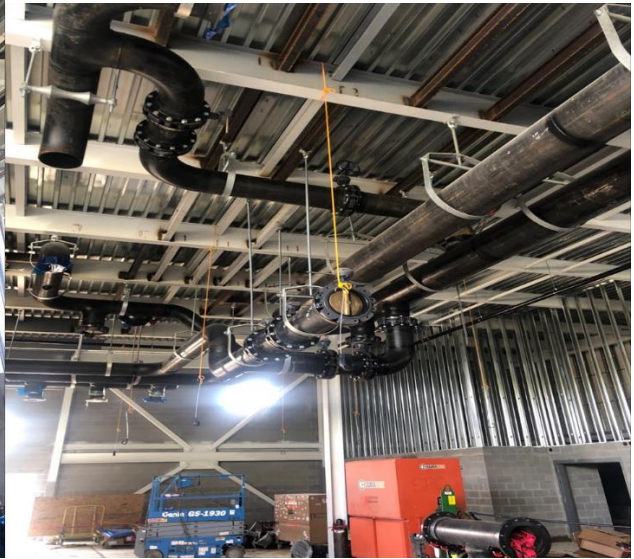
Prefabrication News

Field to BIM April 2022

Success: Thomas Keene, Project Manager in Wendell, mentioned the amount of success he has experienced on the Wake Tech CEP project regarding BIM and prefabrication. This project walk consisted of steel pipe ranging from 12"-20" in diameter. There are several more sizes to come as well as copper prefabrication. This success can be attributed to the number of hours and effort that Robbie Bass, Senior Superintendent, and Thomas put forth into the BIM Model and Spooling processes. Weekly meetings are held by Alan Loar, Senior Coordinator, and Gary Fitzgerald, Spooling Director, that consist of Robbie and Thomas actively interacting with the BIM model to ensure that we are drawing to the quality that fits the project's needs. This level of communication and collaboration is rewarded by the quality of product they are receiving from the BIM model and out of our prefab facility. This was an all-around success for the team!



Geothermal weld prefab at WTCC CEP



Geothermal weld & hanger prefab at WTCC CEP

HR News

Hires:

- 4/4- Brian Everett- Plumbing Foreman I (East)
- 4/5- Jacob Watson- Pipefitter (West)
- 4/5- Jesus Chavez Guerrero- Plumber Helper (East)
- 4/6- Donna Aguilar- Assistant Project Accountant (Corporate)
- 4/18- Chris Cookingham- Startup/Commissioning Manager (West)
- 4/18- Justin Cobb- Service Technician (East)
- 4/18- Russell Brown- Pipefitter Foreman I (West)
- 4/20- Abdias Tanahuvia- Plumber Helper (East)
- 4/20- Cassandra Santiago- Accounting Supervisor (Corporate)
- 4/25- Martin Palacios-Rios (Re-hire)- Plumber Helper (East)
- 4/27- Richard Heckman- Pipefitter Foreman II (East)

Promotions:

- 4/11- Isaac Urrutia-Chavez was promoted from Helper to Plumber Mechanic
- 4/27- Randall Moss was promoted from Helper to Pipefitter

Social Media News

SPC was proud to serve as judges for the HVACR portion of the SkillsUSA State Championships held this year at Guilford Tech in Greensboro! 🏆🔧 Sponsored by PHCC of NC, competitors completed a written test and then participated in hands-on contests in HVACR, Plumbing and Sheetmetal. Thank you to SPC employees Juston Brown, Brian Speer and Dusty Lyons for volunteering your time and congrats to all winners.



April marked the start of an exciting new chapter for NC State with the dedication and ribbon cutting for the new Plant Sciences Building! 🌿🔪 The 185,000 sq ft building will serve as a home to research in solving challenges in agriculture. Thank you to the speakers/organizers for an impressive event and to each member of the SPC team for the hours you put in to make this building happen!



Hit your marks!
One SPC